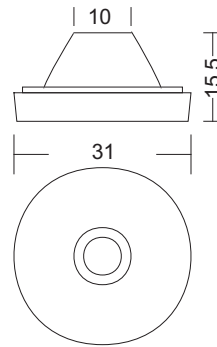
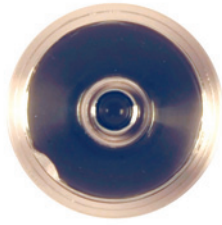
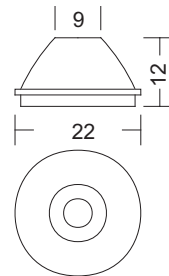


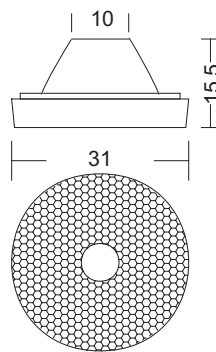
Optische Linsen für Seoul P4 und Luxeon I LED Optical lenses for Seoul P4 and Luxeon I LED



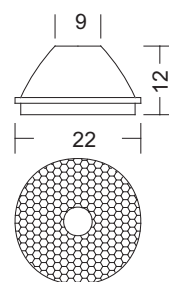
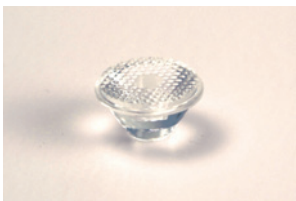
Abstrahlwinkel 10°
beam angle 10° **553-403-00**



Abstrahlwinkel 10°
beam angle 10° **553-404-00**



Abstrahlwinkel 30°
beam angle 30° **553-405-00**



Abstrahlwinkel 30°
beam angle 30° **553-406-00**