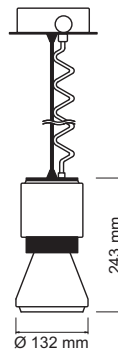


PENDANT / CEILING

Pendelleuchte mit EVG
pendant luminaire with electronic ballast



| Kabellänge cable length | Abstrahlwinkel beam angle | Nennleistung rated power | Artikelnummer ref.-No. |
|----------------------------|------------------------------|-----------------------------|---------------------------|
| 1000 mm | 38° | 35 W | 503-710-91 |
| 1000 mm | 38° | 70 W | 503-711-91 |

PENDANT / CEILING

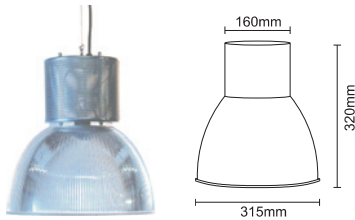
Pendelleuchte
pendant downlight



mit Aluminium-Schirm Ø 315 mm
with aluminium reflector Ø 315 mm

IP 20

| Fassung lampholder | Lampe lamp | Nennleistung rated power | sonstige Ei- genschaften other features | Artikel- nummer ref.-No. |
|-----------------------|---------------|--------------------------------|--|--------------------------------|
| E27 | AGL | max.100 W | | 503-620-86 |
| E27 | HQI-E | 70 W | | 503-621-86 |
| E27 | HQI-E | 100 W | | 503-622-86 |
| G24d-3 | TC-D | 1 x 26 W | | 503-629-86 |
| G24d-3 | TC-D | 2 x 26 W | | 503-630-86 |
| G24q-3 | TC-DEL | 1 x 26 W | dimmbar dimmable | 503-631-86 |
| GX24q-3 | TC-TEL | 1 x 32 W | | 503-632-86 |
| GX24q-4 | TC-TEL | 1 x 42 W | | 503-634-86 |
| GX24q-3 | TC-TEL | 2 x 32 W | | 503-640-86 |
| GX24q-3 | TC-TEL | 2 x 32 W | dimmbar dimmable | 503-641-86 |
| G12 | CDM-T | 70 W | | 503-642-86 |



Reflexor® by LEXALITE®

mit Acryl-Schirm Ø 315 mm
with acrylic reflector Ø 315 mm

IP 20

| Fassung lampholder | Lampe lamp | Nennleistung rated power | sonstige Ei- genschaften other features | Artikel- nummer ref.-No. |
|-----------------------|---------------|--------------------------------|--|--------------------------------|
| E27 | AGL | max.100 W | | 503-420-86 |
| E27 | HQI-E | 70 W | | 503-421-86 |
| E27 | HQI-E | 100 W | | 503-422-86 |
| G24d-3 | TC-D | 1 x 26 W | | 503-429-86 |
| G24d-3 | TC-D | 2 x 26 W | | 503-430-86 |
| G24q-3 | TC-DEL | 1 x 26 W | dimmbar dimmable | 503-431-86 |
| GX24q-3 | TC-TEL | 1 x 32 W | | 503-432-86 |
| GX24q-4 | TC-TEL | 1 x 42 W | | 503-434-86 |
| GX24q-3 | TC-TEL | 2 x 32 W | | 503-440-86 |
| GX24q-3 | TC-TEL | 2 x 32 W | dimmbar dimmable | 503-441-86 |
| G12 | CDM-T | 70 W | | 503-442-86 |



Reflexor® by LEXALITE®

| Artikelbezeichnung article-description | Durchmesser diameter | Höhe height | Artikelnummer ref.-No. |
|--|-------------------------|----------------|---------------------------|
| LexaLite-Acryl-Reflektor LexaLite acrylic reflector | 315 mm | 190 mm | 503-991 |
| Aluminium-Reflektor aluminium reflector | 306 mm | 209 mm | 503-981 |

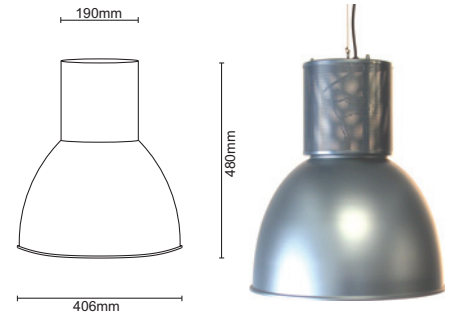
PENDANT / CEILING

Pendelleuchte
pendant downlight

mit Aluminium-Schirm Ø 406 mm
with aluminium reflector Ø 406 mm

IP 20  

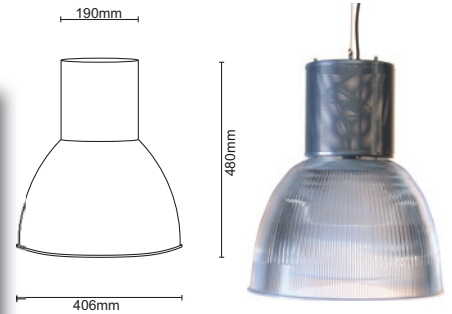
| Fassung lampholder | Lampe lamp | Nennleistung rated power | Artikel- nummer ref.-No. |
|-----------------------|---------------|--------------------------------|--------------------------------|
| E27 | AGL | max. 100 W | 503-600-86 |
| E27 | HQI-E | 70 W | 503-601-86 |
| E27 | HQI-E | 100 W | 503-602-86 |
| E27 | HQI-E | 150 W | 503-603-86 |
| G24d-3 | TC-D | 2 x 26 W | 503-610-86 |
| G24d-3 | TC-D | 3 x 26 W | 503-611-86 |
| G24q-3 | TC-DEL | 3 x 26 W | 503-616-86 |
| GX24q-3 | TC-TEL | 2 x 32 W | 503-617-86 |
| GX24q-4 | TC-TEL | 2 x 42 W | 503-635-86 |
| GX24q-4 | TC-TEL | 2 x 42 W dimmbar dimmbable | 503-636-86 |
| PG12-2 | CDM-TP | 70 W | 503-648-86 |
| PGX12-2 | CDM-TP | 150 W | 503-649-86 |



mit Acryl-Schirm Ø 406 mm
with acrylic reflector Ø 406 mm

IP 20  

| Fassung lampholder | Lampe lamp | Nennleistung rated power | Artikel- nummer ref.-No. |
|-----------------------|---------------|--------------------------------|--------------------------------|
| E27 | AGL | max. 100 W | 503-400-86 |
| E27 | HQI-E | 70 W | 503-401-86 |
| E27 | HQI-E | 100 W | 503-402-86 |
| E27 | HQI-E | 150 W | 503-403-86 |
| G24d-3 | TC-D | 2 x 26 W | 503-410-86 |
| G24d-3 | TC-D | 3 x 26 W | 503-411-86 |
| G24q-3 | TC-DEL | 3 x 26 W | 503-416-86 |
| GX24q-3 | TC-TEL | 2 x 32 W | 503-417-86 |
| GX24q-4 | TC-TEL | 2 x 42 W | 503-435-86 |
| GX24q-4 | TC-TEL | 2 x 42 W dimmbar dimmbable | 503-436-86 |
| PG12-2 | CDM-TP | 70 W | 503-448-86 |
| PGX12-2 | CDM-TP | 150 W | 503-449-86 |



Reflexor® by LEXALITE®

| Artikelbezeichnung article-description | Durchmesser diameter | Höhe height | Artikelnummer ref.-No. |
|--|-------------------------|----------------|---------------------------|
| LexaLite-Acryl-Reflektor LexaLite acrylic reflector | 406 mm | 273 mm | 503-990 |
| Aluminium-Reflektor aluminium reflector | 406 mm | 279 mm | 503-980 |



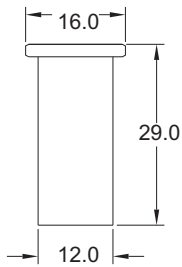
Reflexor® by LEXALITE®

| Artikelbezeichnung article-description | Durchmesser diameter | Höhe height | Artikelnummer ref.-No. |
|--|-------------------------|----------------|---------------------------|
| LexaLite-Acryl-Reflektor LexaLite acrylic reflector | 543 mm | 503-992 | |



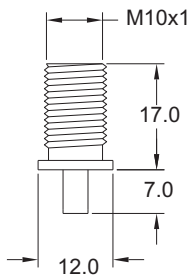
PENDANT / CEILING

Zubehör zu Pendelleuchte
components for pendant downlight



21

| | |
|--|---|
| Artikelbezeichnung article-description | Artikelnummer ref.-No. |
| Deckenbefestigung mit M10x1 Innengewinde und seitlichem Ausgang, vernickelt ceiling attachment M10x1 female, opening for cable, finish nickel | 638-071 |



21

| | |
|--|---|
| Artikelbezeichnung article-description | Artikelnummer ref.-No. |
| Seilhalter für Drahtseil Ø 1,0 - 1,6 mm mit M10x1 Außengewinde, vernickelt cable glider for cable Ø 1.0 - 1.6 mm with M10x1 male, finish nickel | 638-072 |



| | |
|--|---|
| Artikelbezeichnung article-description | Artikelnummer ref.-No. |
| Stahlseil verzinkt Ø 1,0 mm, Länge 2000 mm, einseitig mit Preßklemme 6,0 mm steel cable Ø 1.0 mm, length 2000 mm, one side with pressed nipple 6.0 mm | 638-061 |
| Stahlseil verzinkt Ø 1,0 mm, Länge 3000 mm, einseitig mit Preßklemme 6,0 mm steel cable Ø 1.0 mm, length 3000 mm, one side with pressed nipple 6.0 mm | 638-062 |



50 51

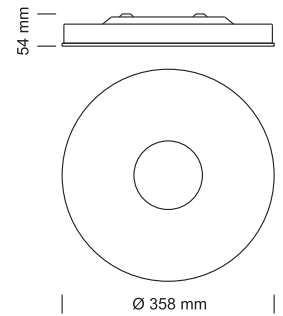
| | |
|--|---|
| Artikelbezeichnung article-description | Artikelnummer ref.-No. |
| Kunststoffbaldachin für Drahtseil mit Zugentlastung plastic canopy for wire with set-connection | 507-901 |

PENDANT / CEILING

Deckenaufbauleuchte mit EVG
Surface mounted luminaire with electronic ballast

| | | | | | | | | |
|--|--|--|--------------|--|--|-------------|------------|--|
| | | | IP 33 | | | W 55 | 358 | |
| | | | 1 | | | | | |

89
503-372-..



Pendelleuchte mit EVG
Pendant luminaire with electronic ballast

| | | | | | | | | |
|--|--|--|--------------|--|--|--------------|-------------|--|
| | | | IP 20 | | | 230V- | W 55 | |
| | | | 1 | | | | | |

89
503-373-..

